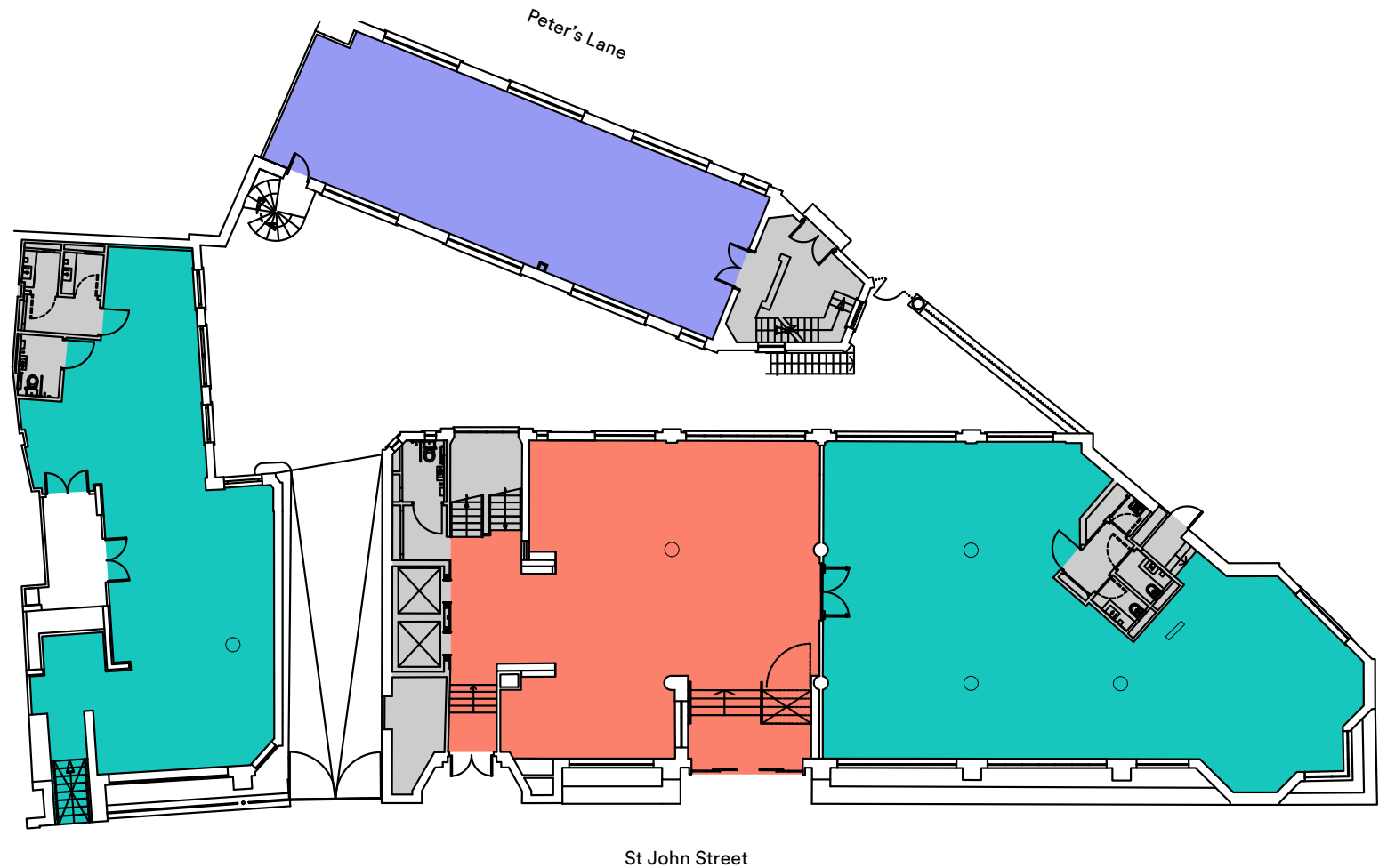


# Porters Place

## Ground Floor

3,983 sq ft (370.0 sq m)

- 11 St John Street  
2,968 sq ft (275.7 sq m)
- Peter's Lane  
1,015 sq ft (94.3 sq m)
- Reception  
1,266 sq ft (117.6 sq m)



North

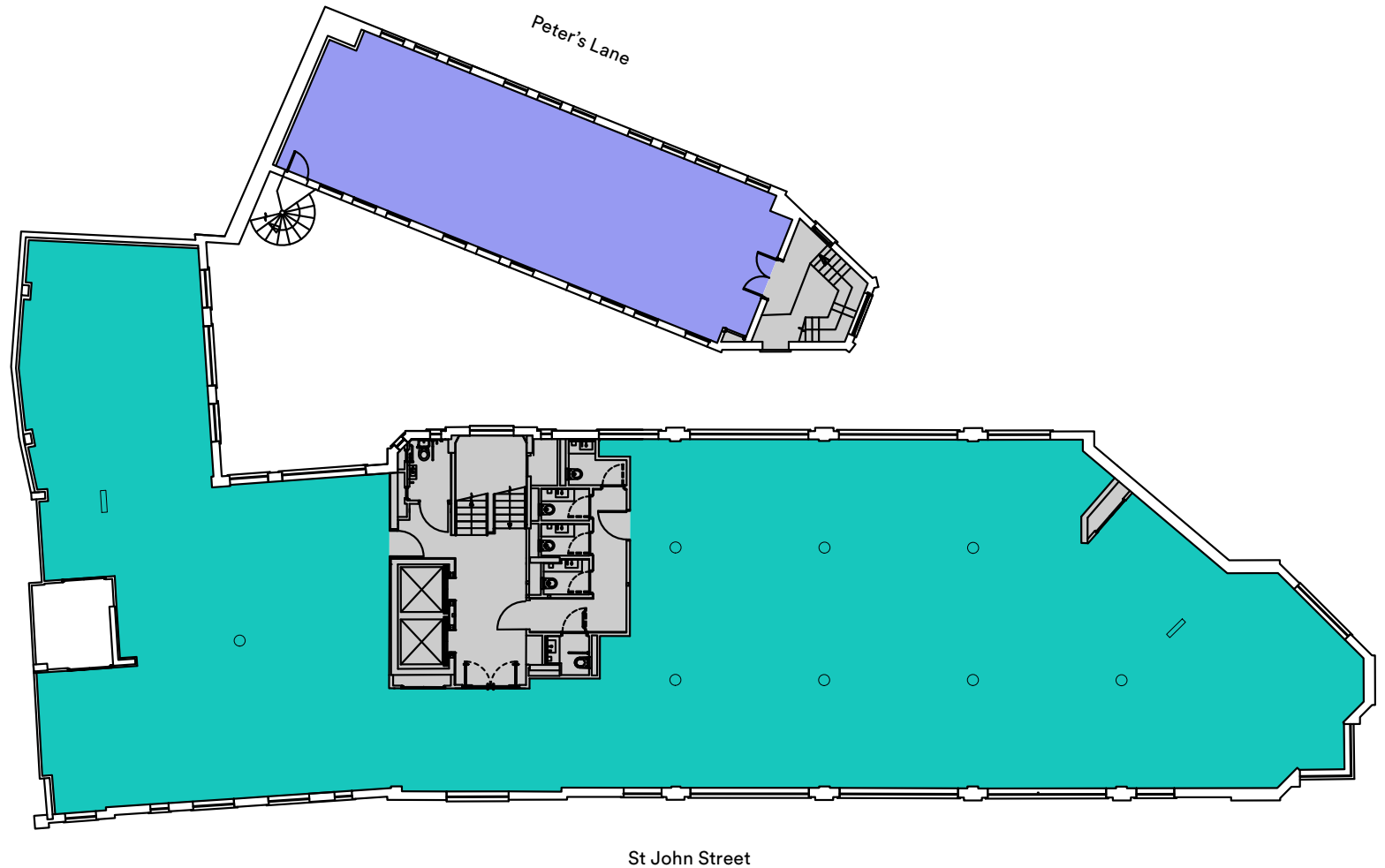
- |          |             |
|----------|-------------|
| ● Office | ● Reception |
| ● Office | ● Core      |

# Porters Place

## First Floor

6,632 sq ft (616.1 sq m)

- 11 St John Street  
5,533 sq ft (514.0 sq m)
- Peter's Lane  
1,099 sq ft (102.1 sq m)



North

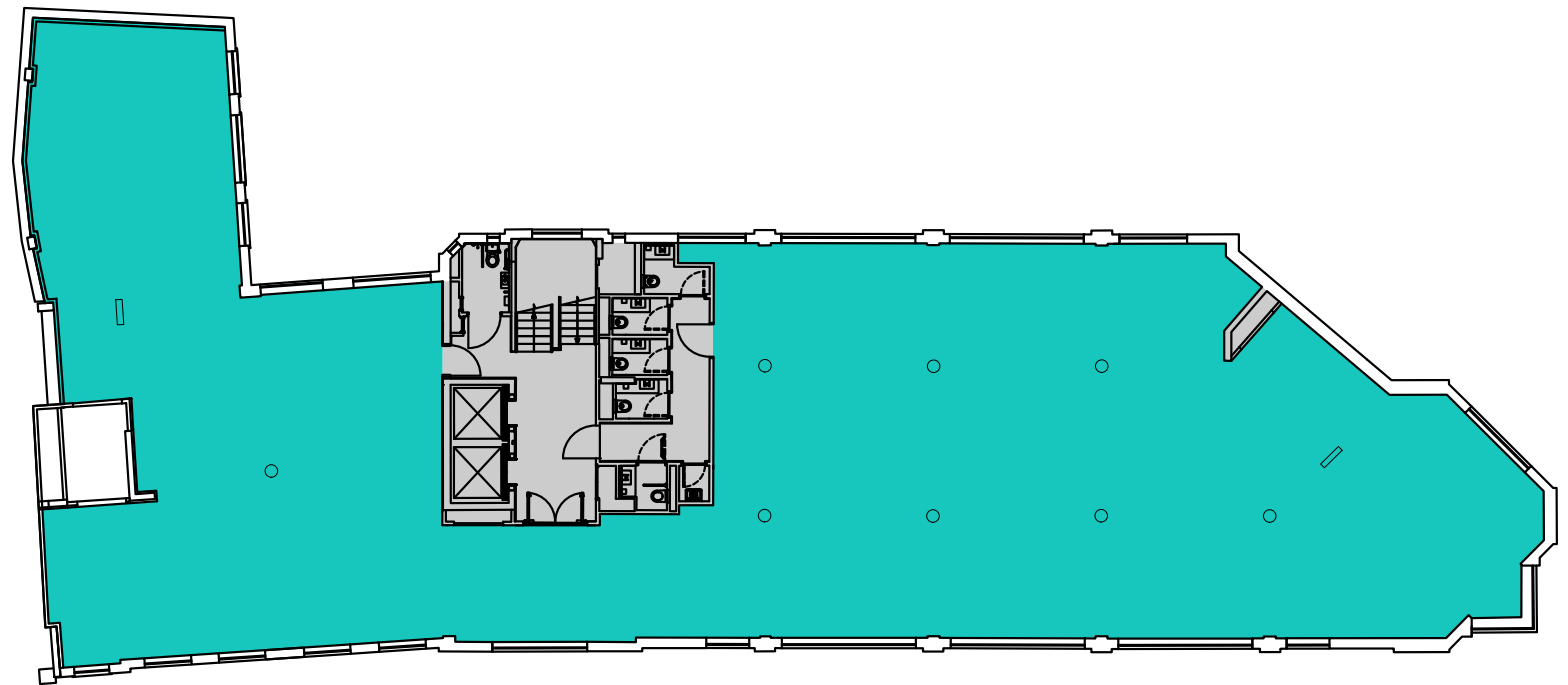
- Office
- Office
- Core

# Porters Place

## Second Floor

5,576 sq ft (518.0 sq m)

---



St John Street

North

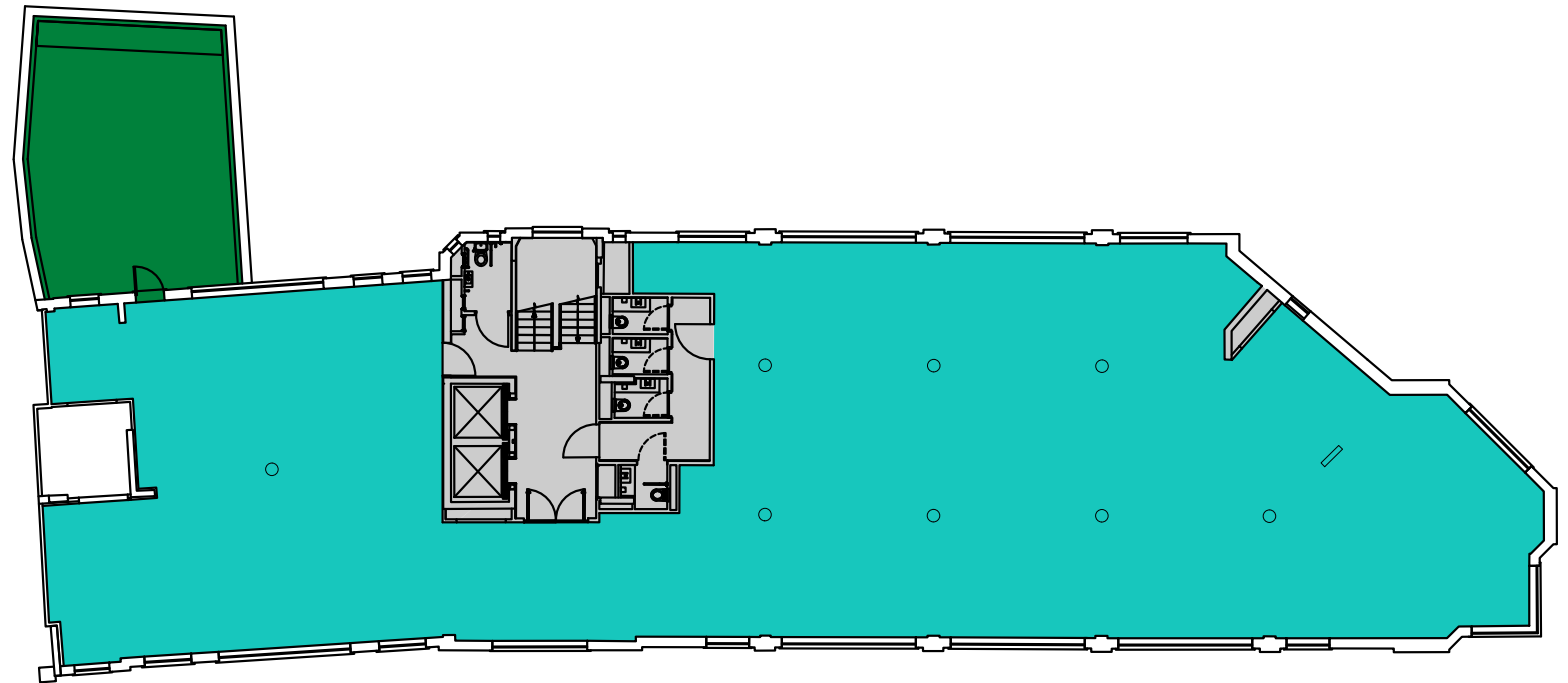
- Office
- Core

# Porters Place

## Third Floor

4,980 sq ft (462.7 sq m)

---



St John Street

North

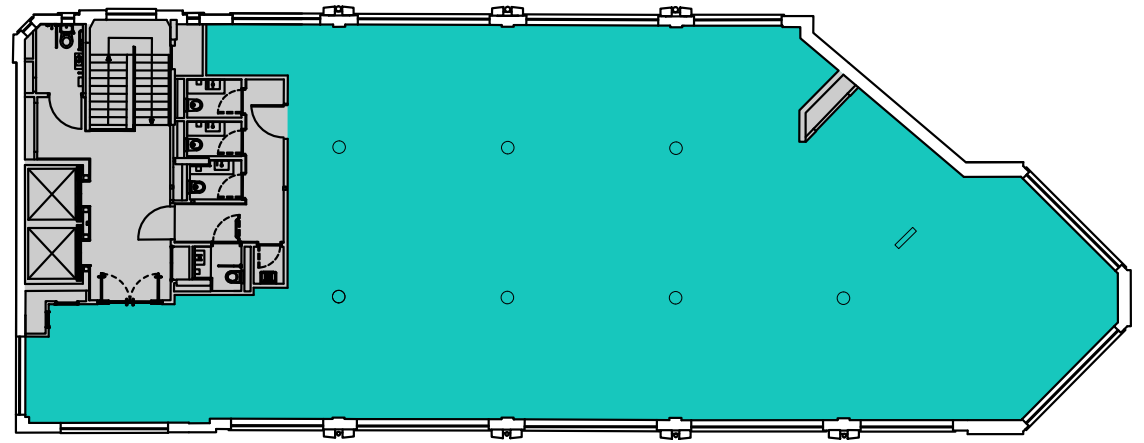
- Office
- Terrace
- Core

# Porters Place

## Fourth Floor

3,476 sq ft (322.9 sq m)

---



North

- Office
- Core

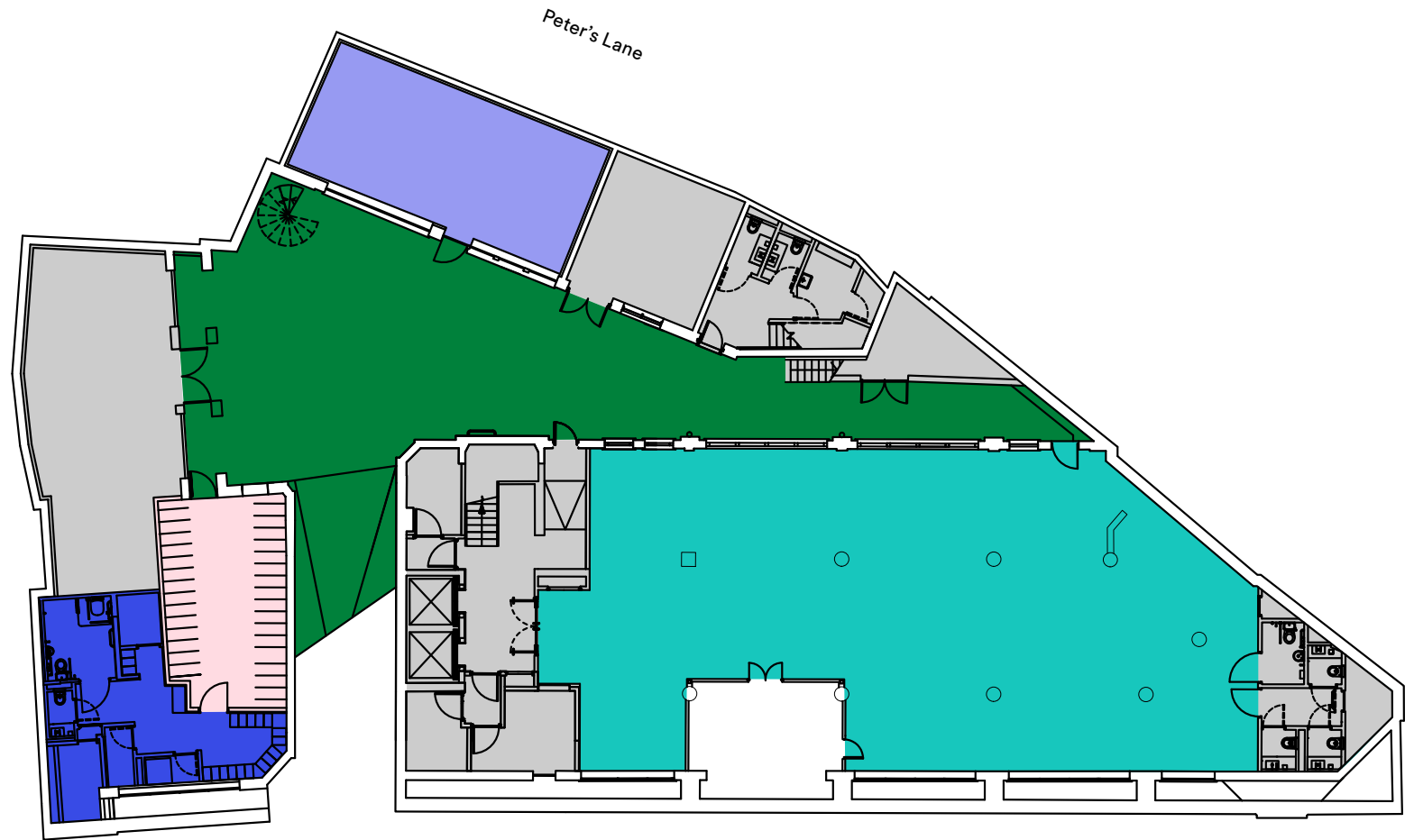
St John Street

# Porters Place

## Lower Ground Floor

3,127 sq ft (290.5 sq m)

- 11 St John Street  
2,608 sq ft (242.3 sq m)
- Peter's Lane  
519 sq ft (48.2 sq m)
- Courtyard  
1,611 sq ft (149.7 sq m)



North

- |             |                 |
|-------------|-----------------|
| ● Office    | ● Cycle Storage |
| ● Office    | ● Showers       |
| ● Courtyard | ● Core          |

St John Street